



# DAMPER

Pneumatic, automatic pulsation dampeners Realized in:  
PP, PVDF, ALUMINIUM, SS AISI 316, POMc  
Applicable to all size of pumps.  
ATEX ZONE 2 AND ZONE I CERTIFICATION  
Available also in FOOD version.





# DAMPER

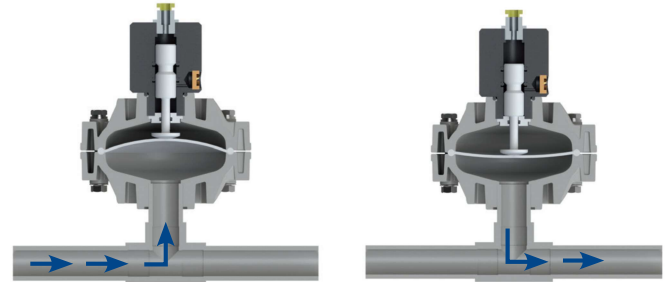
The active pulsation dampener is the most efficient way to remove pressure variations on the discharge of the pump. Fluimac pulsation dampener works actively with compressed air, setting automatically the correct pressure to minimize the pulsations. Pulsation dampeners require minimum maintenance and are, subject to the requirements of the application, available in the same housing and diaphragm materials as the pump.

## HOW IT WORKS

The pulsating flow of the discharge forces the diaphragm upwards where it is cushioned by the air in the chamber. The flexing of the diaphragm absorbs the pulsation giving a smooth flow.



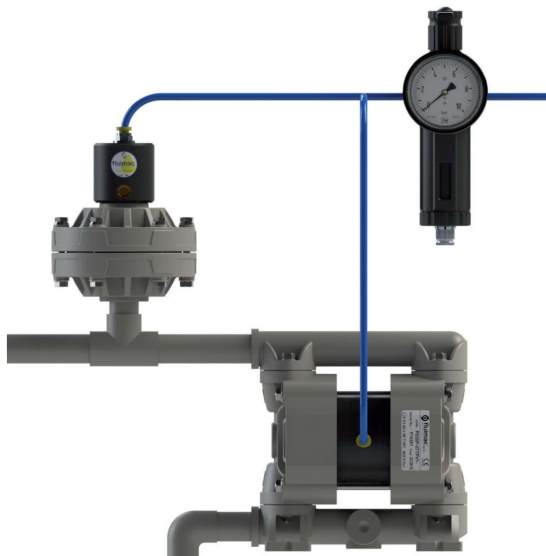
**Significant Pulsation Reduction with an average 70% - 80% pulsation reduction in high back pressure applications.**



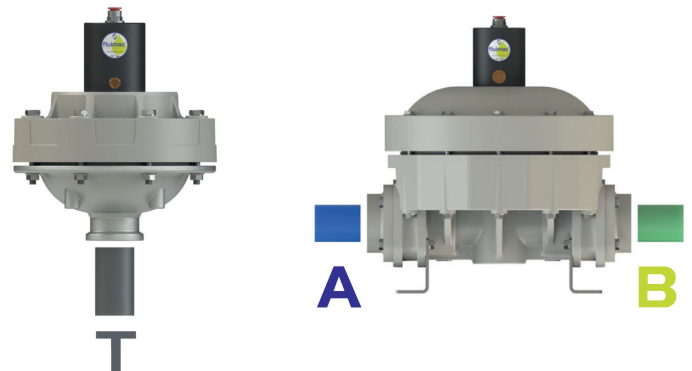
## APPLICATION

- **METERING/INJECTION/DOSING:**  
Equalizes discharge pressure spikes, increasing accuracy;
- **FILTER PRESS/INLINE FILTERS:**  
Increases filter efficiency and life by providing a smooth flow;
- **SPRAYING:**  
Smooth, consistent spray pattern;
- **FILLING:**  
Eliminates inconsistent filling and splashing;
- **TRANSFER:**  
Eliminates harmful water hammer, preventing pipe and valve damage.

## INSTALLATION



## PORT POSITION



# D20



PP

Fluid connections **3/4" BSP**  
 Air connection **6 mm**  
 Max air pressure **8 bar**  
 Capacity Volume **80 CC ~**

**ATEX ZONE 2** certification as Standard and, on request, **ATEX ZONE 1**.

**APPLY TO:**  
7 - 18 - 30



PVDF+CF



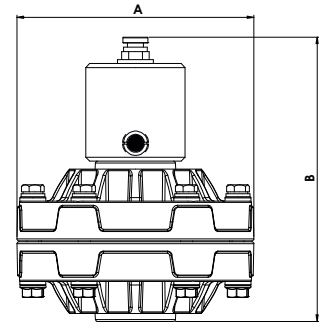
POMc



AISI

MODEL	CASING	DIAPHRAGM	CONNECTIONS	PORTS
D020	P = PP KC = PVDF+CF O = POMc S = SS	HT = HYTREL+PTFE MT = SANTOPRENE+PTFE H = HYTREL M = SANTOPRENE	1 = BSP 2 = FLANGE 5 = NPT	T = STANDARD

	PP	PVDF	POMc	AISI
<b>A (mm)</b>	119	119	119	119
<b>B (mm)</b>	143	143	143	143
<b>Net Weight Kg</b>	0,65	0,7	0,65	2
<b>Max Temperature</b>	+65°C	+95°C	+80°C	+95°C
<b>Min Temperature</b>	-4°C	-20°C	-5°C	-20°C



# D25



PP

Fluid connections **1" BSP**  
 Air connection **8 mm**  
 Max air pressure **8 bar**  
 Capacity Volume **200 CC ~**

**ATEX ZONE 2** certification as Standard and, on request, **ATEX ZONE 1**.

**APPLY TO:**  
55 - 60 - 90 - 120



PVDF+CF



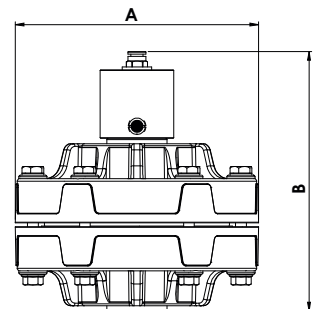
POMc



AISI

MODEL	CASING	DIAPHRAGM	CONNECTIONS	PORTS
D025	P = PP KC = PVDF+CF O = POMc S = SS	HT = HYTREL+PTFE MT = SANTOPRENE+PTFE H = HYTREL M = SANTOPRENE D = EPDM N = NBR	1 = BSP 5 = NPT	T = STANDARD AB = SS

	PP	PVDF	POMc	AISI
<b>A (mm)</b>	181	181	181	181
<b>B (mm)</b>	195	195	195	182
<b>Net Weight Kg</b>	1,75	2	1,9	6,7
<b>Max Temperature</b>	+65°C	+95°C	+80°C	+95°C
<b>Min Temperature</b>	-4°C	-20°C	-5°C	-20°C



# D40



PP

Fluid connections **1”1/2 BSP**  
 Air connection **10 mm**  
 Max air pressure **8 bar**  
 Capacity Volume **700 CC ~**

**ATEX ZONE 2** certification as Standard and, on request, **ATEX ZONE 1**.

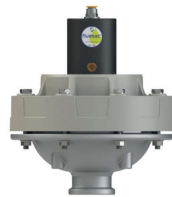
**APPLY TO:**  
 170 - 252 - 400



PVDF+CF

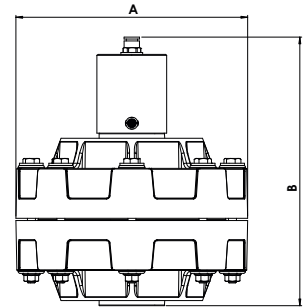


POMc



AISI

	PP	PVDF	POMc	AISI
<b>A (mm)</b>	231	231	231	231
<b>B (mm)</b>	270	270	270	267
<b>Net Weight Kg</b>	4	4,6	4,2	5,6
<b>Max Temperature</b>	+65°C	+95°C	+80°C	+95°C
<b>Min Temperature</b>	-4°C	-20°C	-5°C	-20°C



MODEL	CASING	DIAPHRAGM	CONNECTIONS	PORTS
<b>D040</b>	P = PP KC = PVDF+CF O = POMc S = SS	HT = HYTREL+PTFE MT = SANTOPRENE+PTFE H = HYTREL M = SANTOPRENE D = EPDM N = NBR	1 = BSP 2 = FLANGE 5 = NPT	T = STANDARD

# D50



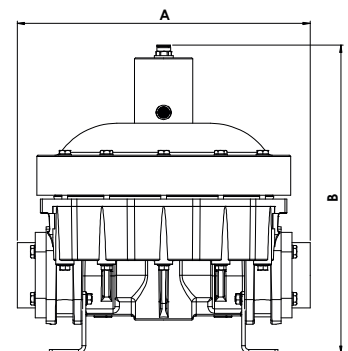
PP

Fluid connections **2” BSP**  
 Air connection **12 mm**  
 Max air pressure **8 bar**  
 Capacity Volume **2900 CC ~**

**ATEX ZONE 2** certification as Standard and, on request, **ATEX ZONE 1**.

**APPLY TO:**  
 700 - 1000

	PP	PVDF	ALU	AISI
<b>A (mm)</b>	404	404	400	402
<b>B (mm)</b>	425	425	425	408
<b>Net Weight Kg</b>	14	17	14,5	21,6
<b>Max Temperature</b>	+65°C	+95°C	+80°C	+95°C
<b>Min Temperature</b>	-4°C	-20°C	-5°C	-20°C



PVDF+CF



ALU



AISI

MODEL	CASING	DIAPHRAGM	O-RING	CONNECTIONS	PORTS
<b>D050</b>	P = PP KC = PVDF+CF A = ALU S = SS	HT = HYTREL+PTFE MT = SANTOPRENE+PTFE H = HYTREL M = SANTOPRENE D = EPDM N = NBR	D = EPDM V = VITON N = NBR T = PTFE	1 = BSP 2 = FLANGE 5 = NPT	AB = STANDARD



# ACCESSORIES



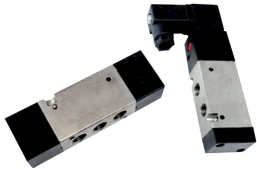
## AIR REGULATION KIT

Adjust and set air pressure and airflow-rate with a filter regulator, pressure gauge and air valve unit.



## INOX TROLLEY

It makes pumps transportable.



## SWITCH VALVES

Remotely start and stop with a solenoid or pneumatic valve for the pump's air line.



## ANTI VIBRATION FEET KIT

Reduces physical vibration from AODD pump operation.



## STROKE COUNTER

Count the number of strokes, connected to a control. It allows various type of monitoring.



## PP, PVDF, ALU SS NOZZLE

Dispenser to delivery control and batching.



## DIAPHRAGM FAILURE DETECTION FLUID-GUARD

The Leak Detector provide a signal and the pump can be shut down when diaphragms fail.



## REINFORCED PVC HOSE

With metal reinforcement for suction/discharge, also food-grade.



## PNEUMATIC BATCH CONTROL

Pneumatic batcher can control any FLUIMAC AODD pump allowing you to set the cycles amount and count the strokes.



## FOOT BALL VALVE

Realized in PP and PVDF. Size available 1" - 1"1/4 - 1"1/2 - 2" Used to prevent the suction hose from emptying.



## ELECTRONIC BATCH CONTROL

Electronic batcher can control any FLUIMAC AODD pump allowing you to set the cycles amount and count the strokes.



## SOFT STARTER

It is always recommended to start up an AODD pump slowly. This to protect the diaphragms.



## BASKET STRAINER FILTERS IN PP

Installed on the suction of the pumps, protects them from suspended solids and impurity.



## VALVES FITTINGS AND CONNECTIONS IN PP, PVC, INOX



## GEMINI CONTROL

Electronic Control System for accurate pumps. This system allows you to use AODD pump as dosing system.



## FLANGE CONNECTION KIT

It modifies a pump with BSP connection into a flanged pump.



## PRESSURE BOOSTER

Where the line pressure is not enough, this system doubles the in let pressure to supply correctly the air to the pump.



## WALL FIXING BRACKET

Wall fixing bracket for diaphragm pumps, for all sizes.



# fluimac<sup>®</sup>

pump solution



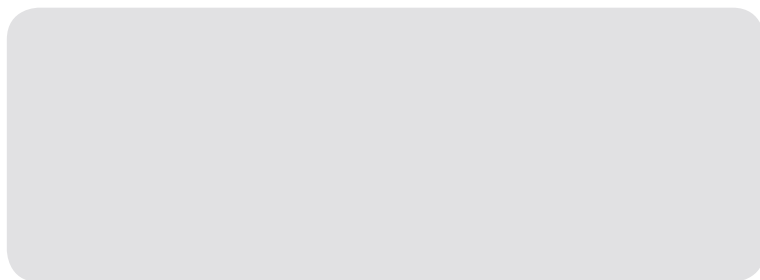
**FLUIMAC S.r.l.**

Via Brescia I  
21049, Tradate (VA) - Italy  
Tel.:+39 0331 866688  
Fax:+39 0331 864870

[www.fluimac.com](http://www.fluimac.com)  
[info@fluimac.com](mailto:info@fluimac.com)



**AUTHORIZED PARTNER:**



*Made in  
Italy*

